



# SHRI MAHAVEER DIGAMBER JAIN SENIOR SECONDARY SCHOOL

Run By Shri Mahaveer Digamber Jain Shiksha Parishad  
(English Medium School affiliated to R.B.S.E.)

Stepping into **CAMBRIDGE BOARD**

Day Boarding Facility also available (Classes Nursery - Prep)

## ADMISSION OPEN

Session 2026-27  
Classes I to IX & XI

Streams Offered

**Science | Commerce | Arts**  
RBSE Board (English Medium)

# ATIVEERA

**"SMALL BACKPACK, HUGE CURIOSITY"**

We guide the budding intellectuals to explore the universe and expand their learning vistas.

 [www.mahaveerschooljaipur.com](http://www.mahaveerschooljaipur.com)

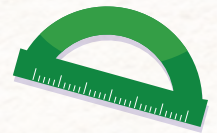
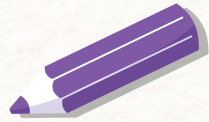
 [smdj\\_school@yahoo.co.in](mailto:smdj_school@yahoo.co.in)

Mahaveer Marg, C-Scheme, Jaipur 

Call Us: +91 99285 72008 

# EXTENSION OF SAFE HANDS

## WHY ATIVEERA?



How we wish, we could still go back to our childhood and enjoy the stress free magical time with playtime fun for eons! At Aiveera, we emphasize on high quality early education in a safe environment and facilitate maximum enjoyment for the cute little enthusiasts in the best of all seasons - Childhood!

## What we do? *Childcare Programs at Aiveera*

With Aiveera, we always put the quality of teaching children first, please rest assured when sending children at Aiveera.

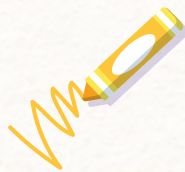
## What extra we do? *Out of Syllabus.*

With extended horizons of learning, we target comprehensive development of the malleable children, gearing them up for the challenges ahead, on academic as well as non-academic front.



### Salient Features

- ✔ Global Recognition
- ✔ Academic & Learning Excellence
- ✔ Creative & Innovative Learning
- ✔ Skill-Based Learning
- ✔ Play-way Methodology
- ✔ Language Proficiency



### Special Features

- 50% Concession for Armed Forces Personnel's Children
- Free Education for Wards of Martyrs
- 25% Concession for Jain Boys (New Admission)
- 25% Concession for Girl Students

### Co-curricular & Overall Development

- Smart Academic & Skill Development
- Skill Based Learning
- Qualified & Trained Faculty
- Student Assessment



### Infrastructure Facilities (for Cambridge Board Classes)

- Artful Classrooms ✔
- AC Classrooms with Smart Interactive Panel/Boards ✔
- Outdoor & Indoor Playzone Area ✔
- CCTV Security ✔

### Facilities That Empower Learning

- ✔ State-of-the-Art Infrastructure
- ✔ Digital Smart Classrooms (Class I-X)
- ✔ Excellence in Academics & Sports
- ✔ Robotics & Modern Computer Labs
- ✔ Fully Equipped Science Labs
- ✔ Huge Playground & Bimal Cricket Academy



## WELCOME MESSAGE

We have a proper procedure to settle each new student in our school whereby we use creative approaches to reach the child's comfort level. Even the parents are made a part of it during the inception. Our scanning process at each level ensures that the strengths and weaknesses of every child are made aware to the forthcoming class teachers.

We hold discussions about each and every child's performance internally as well as with the parents on a regular and descriptive basis to work on the areas where the child needs more attention to achieve all round development. Our little initiatives go a long way in laying the foundation for holistic development of the children, which is cognitive as well as social.

Hence, if you are looking for a school that lays emphasis on nurturing each and every child, being responsive towards the varied needs and facilitates creative ways to handle pitfalls, your search has been productive here. Look at some of the areas that will assure you that our hands are an extension of yours with respect to safety, love and care of your child.



## KEY FEATURES AND PHILOSOPHY

- **CURRICULUM:** Focuses on experiential learning, including activities designed to foster independent thinking, creativity, and self-regulation.
- **APPROACH:** Allowing for a relaxed, self-paced, and stress-free environment.
- **ACTIVITIES:** Includes dance, recreational games, arts and crafts, & field trips, intended to develop physical, social, and cognitive skills & many more.
- **ENVIRONMENT:** Focuses on providing a secure, and stimulating space for young children.



## ADMISSIONS AND STRUCTURE

- **PROCESS:** Parents are advised to visit the branch for the further consultation.
- **REQUIREMENTS:** Application requires a completed form, 4 passport-size photographs, a birth certificate (Nagar Nigam), and a transfer certificate (TC) for students transferring from other schools.
- **BRANCHES:** The school operates in C-Scheme area, Jaipur, with operational hours typically between 8:00 AM-2:00 PM, depending on the working days.





## ADMISSION PROCEDURE



1. Obtain the registration form on a nominal payment.
2. Register the student by depositing the registration fees (non-refundable) along with duly filled registration form.
3. submit the filled-up admission form along with admission fees (non-refundable) and relevant documents.
4. Collect fee-slip and deposit 1st quarter installment.  
(If required, and interaction with the student will be conducted before admission is granted.)



## CONVEYANCE FACILITY

School does not provide conveyance facility, however information about Auto-Rickshaws plying on different routes can be obtained from the office / reception counter.

## OUR MENTORS



PRESIDENT  
Umrao Mal Sanghi



SECRETARY  
Sunil Bakhshi



PRINCIPAL  
Sandeep Shandilya